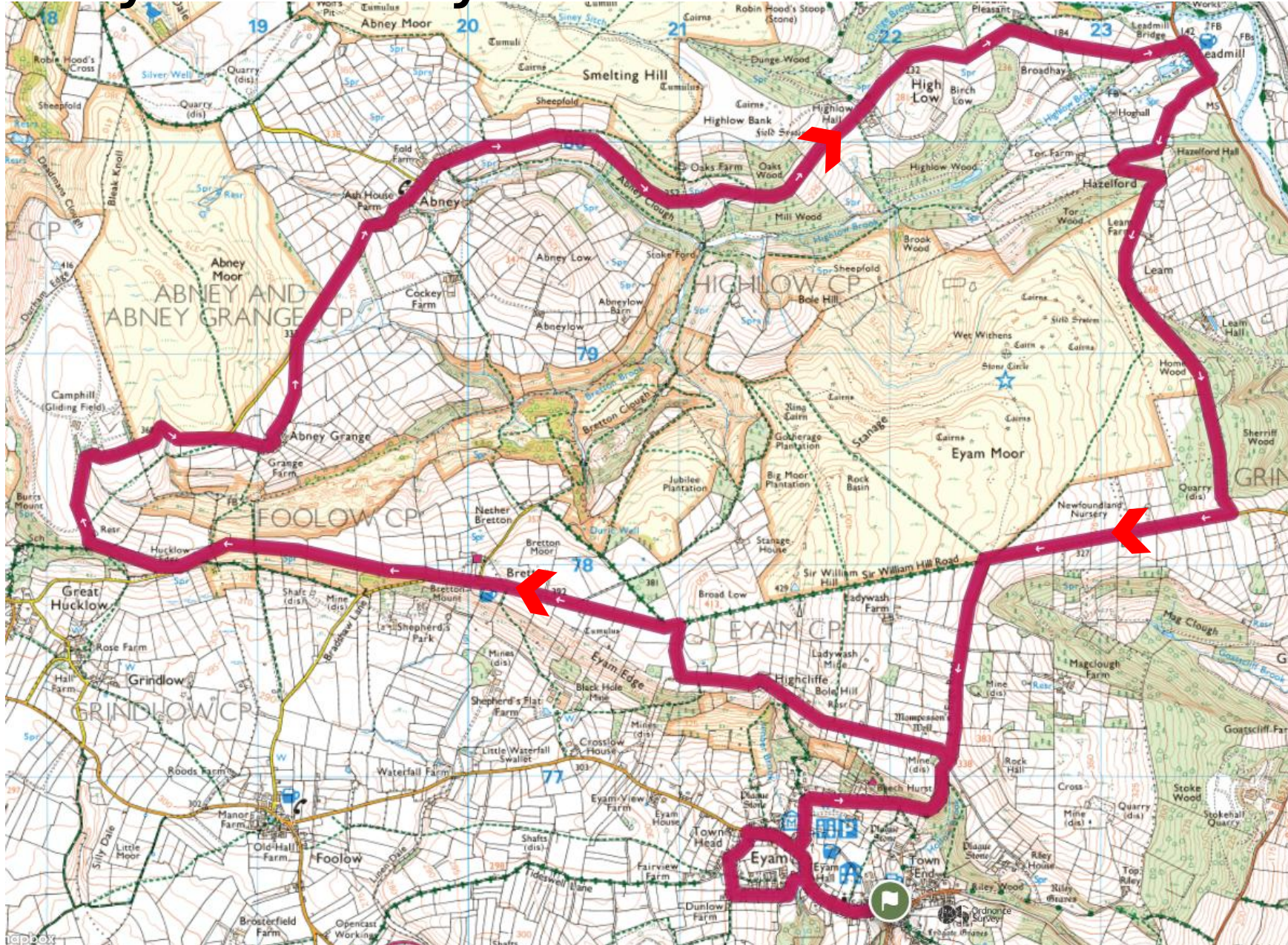
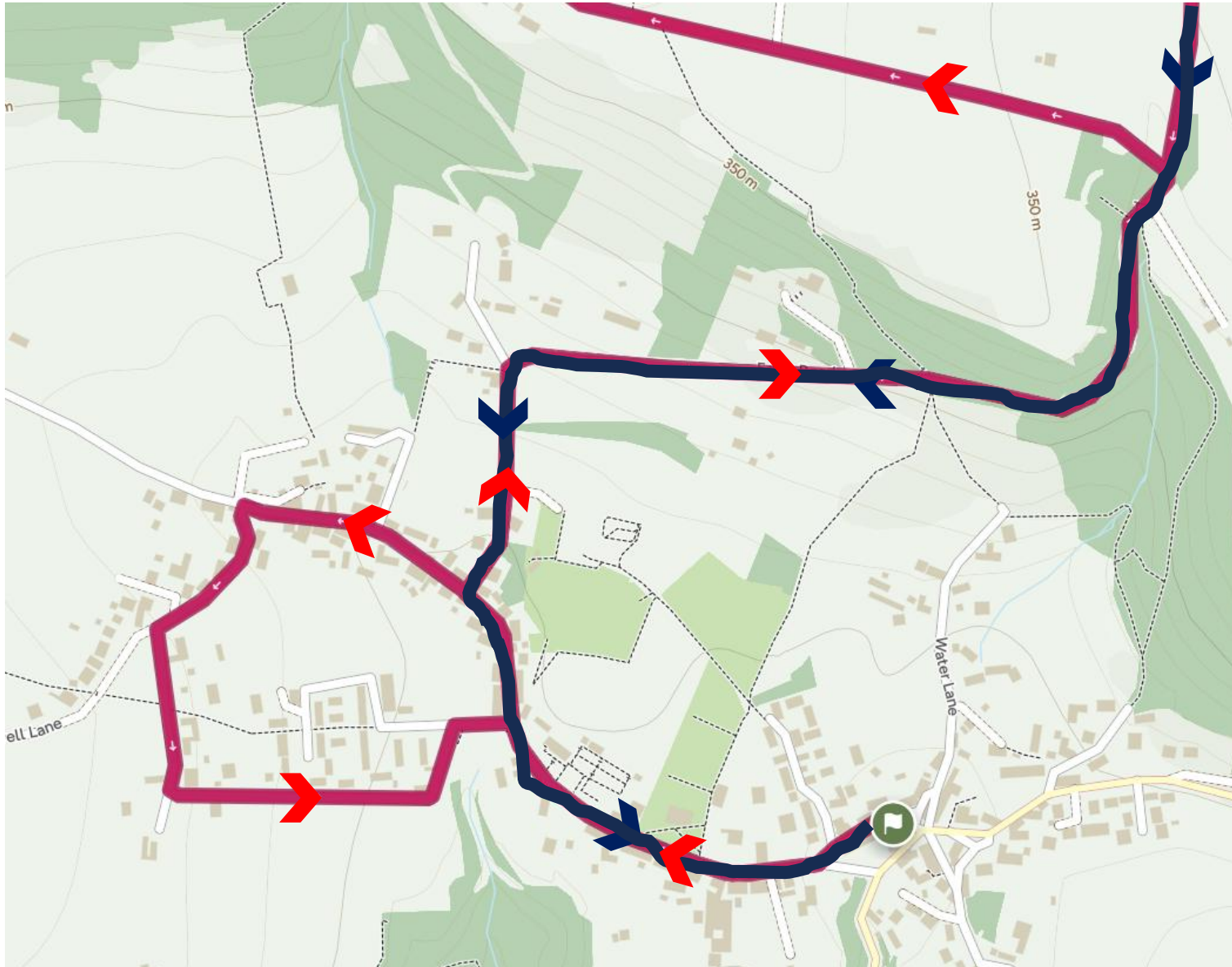


May 2026 – Eyam Half Marathon



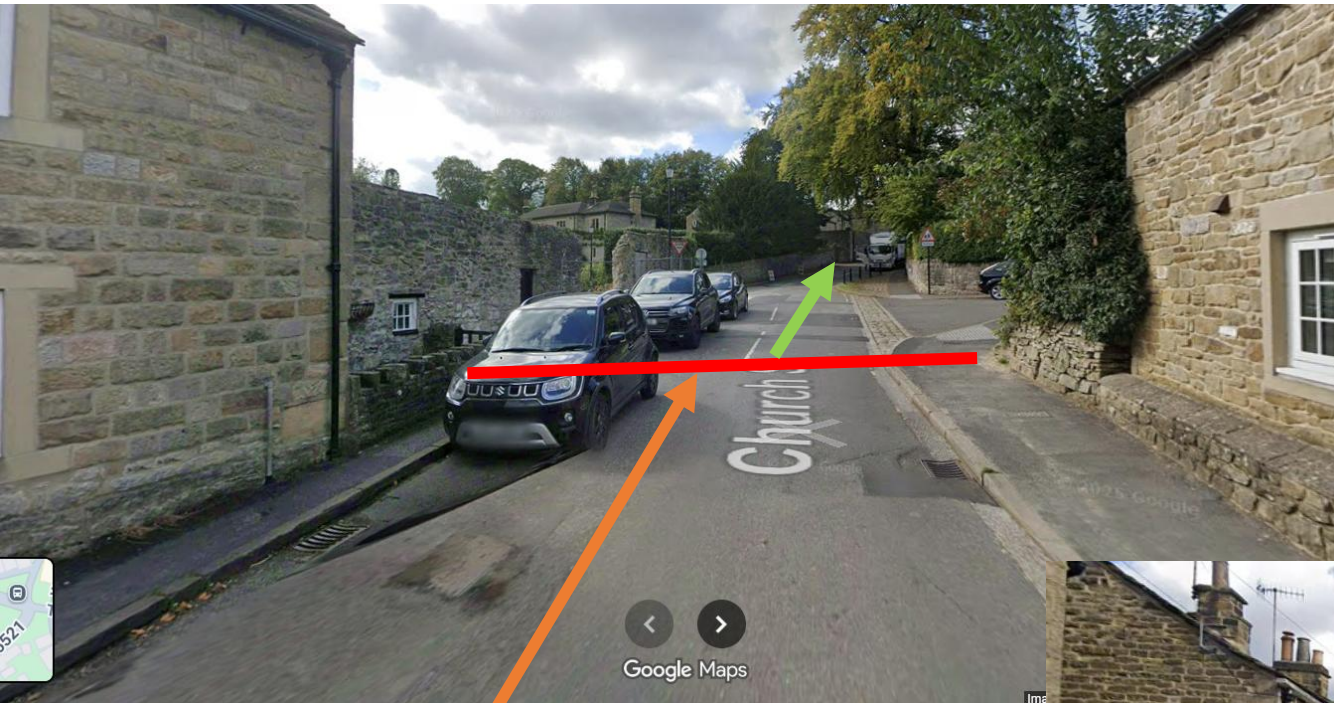
Discipline = Road
13.1 Miles x 1,620 ft

Race 17/05/26 or
Time Trial



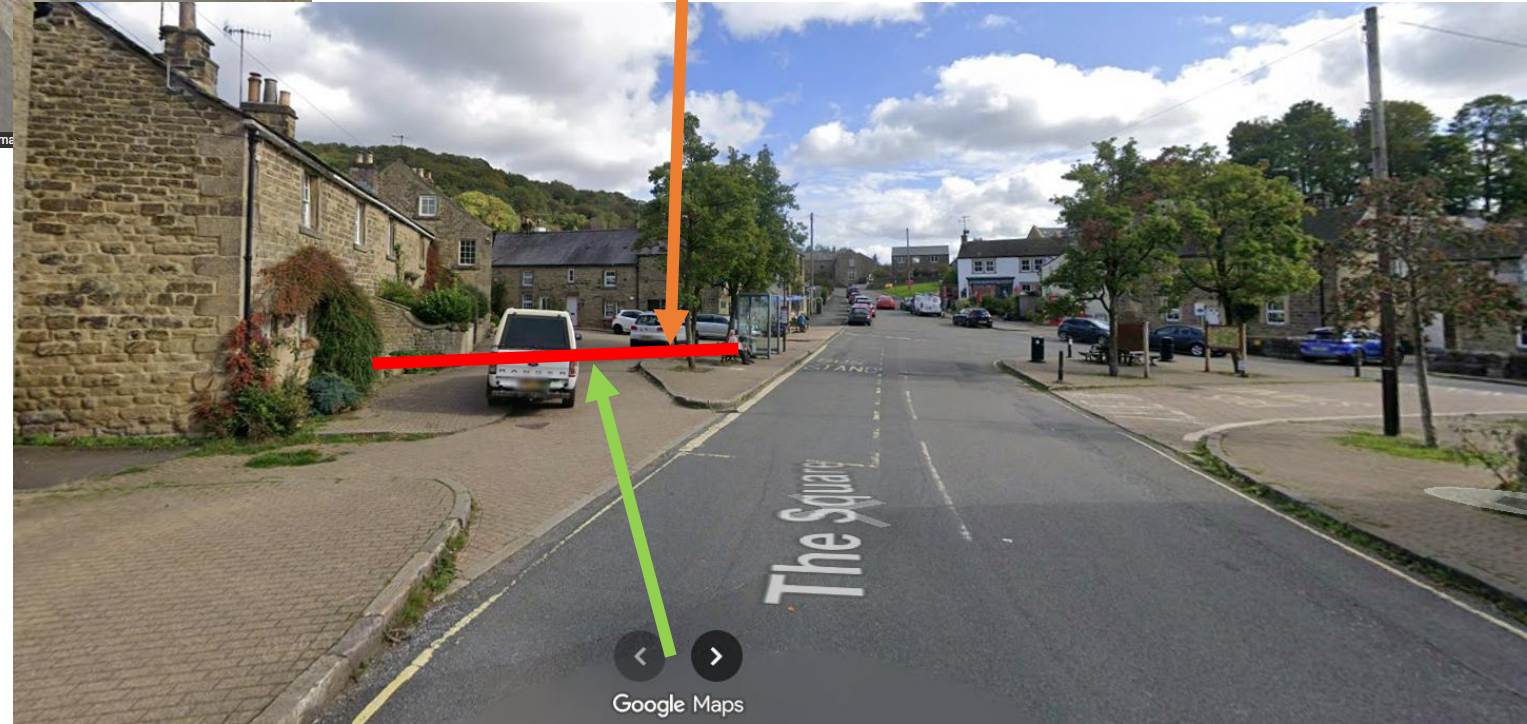
Red line and arrows show outward leg from start.

Blue line and arrows show the return leg to the finish (much of which retraces outward leg).



Start on Church Street, adjacent by the start of Glebe Park.

Finish in Town Square, behind bus stop (50m beyond where you started).



- Note – To pick up Strava segment, always start slightly in advance, and finish slightly beyond indicated start/finish point.